

INLGB02LPRI RWA

2.1MP ANPR LPR Bullet Camera

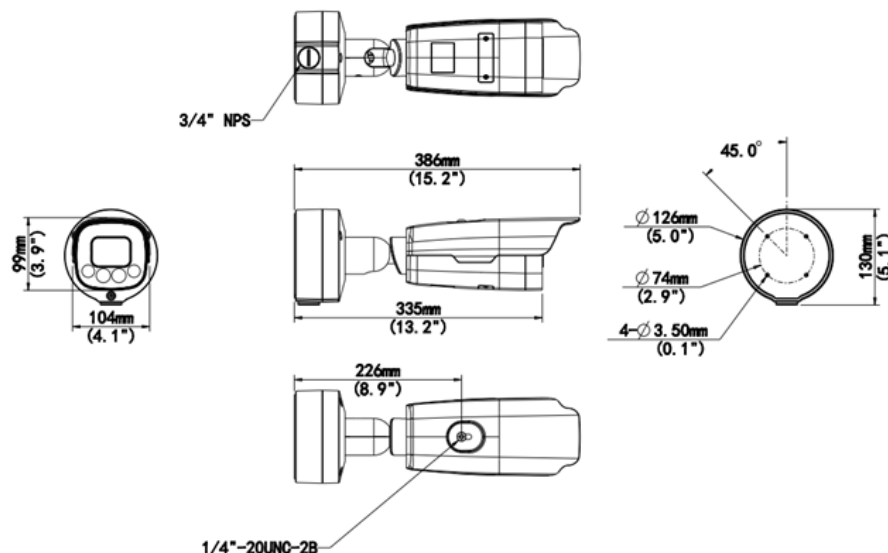
- High quality image with 2MP, 1/2.8" CMOS sensor
- 120dB True WDR technology
- H.265 & H.264 encoding
- Four infrared LED emitters provide up to 50 meters of illumination range, ensuring reliable low-light performance.
- Supports Micro SD card up to 256GB
- Integrated vehicle and license plate recognition algorithm accurately identifies standard license plates across various countries.



Legend: Smarter, Stronger, Fully NDAA Compliant

The **INLGB02LPRI RWA** is a 2.1MP ANPR LPR bullet camera equipped with a 1/2.8" CMOS sensor, True WDR, and advanced H.265/H.264 encoding for high-quality imaging in various lighting conditions. It features infrared illumination up to 50 meters and built-in license plate recognition for accurate vehicle identification across multiple countries.

Dimensions



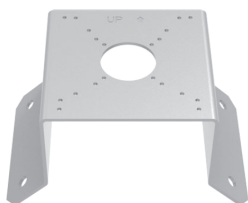
*Design and specifications are subject to change without notice.

Camera			
Image Sensor	1/2.8", 2.0 megapixel, CMOS		
Minimum Illumination	Colour: 0.001 lux (F1.6)		
Day/Night	IR-cut filter with auto switch (ICR)		
Shutter	Auto/Manual, range: 1/25 to 1/100000s		
WDR	120 dB		
S/N Ratio	More than 52 dB		
Lens			
Focal Length	4.7~47mm		
Lens Type	Motorized zoom		
Viewing Angle (H, V, D)	H : 57.5° ~ 5.1°	V : 32.8° ~ 2.6°	D : 65° ~ 5.8°
Video			
Compression	H.265 / H.264		
Image Collection Format	1080P@25 (default), 1080P@30, 1080P@50, 1080P@60		
Frame Rate	60, 50, 30, 25 (default), 22, 20, 18, 16, 15, 12.5, 10, 8, 6, 5, 4, 3, 2, 1		
Resolution	Main stream: 1080P (default), 720P, D1 Sub stream: 720P (default), D1, 2CIF, CIF Third stream: D1 (default), 2CIF, CIF		
On-Screen Display (OSD)	Video OSD: Supports 8 overlay areas and allows contents including date, time, date&time, zoom ratio, custom contents		
	Image OSD: Supports 8 overlay areas and allows contents including time, license plate number, device ID, camera ID, allowlist, image authentication ID, custom contents (3 items), location		
Region of Interest	Up to 8 regions		
Structure			
Illumination	Built in integrated illumination module, including 4 IR LEDs, 50m illumination distance, automatic on/off control		
Sunshield	Long sunshield		
Bracket	3 axis mounting bracket		
Junction box	The camera comes with a junction box for storing tail cable		
Image Features	Smart IR, Highlight Compensation, Backlight Compensation, Digital Defog		
Smart			
Application Scenario	≤ 30km/h for entrances and exits, ≤ 80km/h for regular roads; Supports simultaneous application to road and entry/exit scenes without switching		
Vehicule Detection Mode	Video (default) or inductive loop		
License plate number recognition	Supports recognition of license plates with numbers and letters by default		
List configuration	Supports allowlist and blocklist configuration, each list allows 20,000 items Supports import, export, add, and delete operations		

*Design and specifications are subject to change without notice.

Barrier opening policy	Open barrier only for the recognized vehicles Open barrier for all vehicles Open barrier only for vehicles on the allowlist Open barrier for vehicles not on the blocklist Configurable Boolean output ID
Storage	
Edge Storage	Supports ANR with Micro SD, up to 256GB
Interface	
RS485	1
Boolean Output	1 relay output, withstand voltage: AC 125V/0.3A, DC 30V/1A
Boolean input	2 inputs, supports level/Boolean, with max level up to DC 5V
Audio Interface	1 x Audio input, 1 x Audio output
BNC	PAL, NTSC
Storage Interface	1 x Micro SD card slot
Ethernet	1x10M/100M RJ45
Network	
Protocols	IGMP, IPv6, ICMP, ARP, TCP, UDP, DHCP, PPPoE, RTSP, DNS, DDNS, NTP, UPnP, HTTP, HTTPS, 802.1x, SNMP, QoS, SSL/TLS, SSH, IPv4
Compatibility	ONVIF (Profile S, G, T), API
Management Software	LEGEND VMS, ARKIV
Certifications	
Protection	IP67, IK10
General	
Power	DC 12V±25% - 10%
PoE	802.3at, class 4
Power Consumption	Less than 20W
Dimensions (L x W x H)	386 x 126 x 130 mm
Weight	2kg / 4.41lb
Working Environment	-40°C to 60°C, ≤90% RH
Reset Button	Supported
Heat element	Supported

Accessories



XLGUC08-C
Corner Mounting
Bracket

*Design and specifications are subject to change without notice.